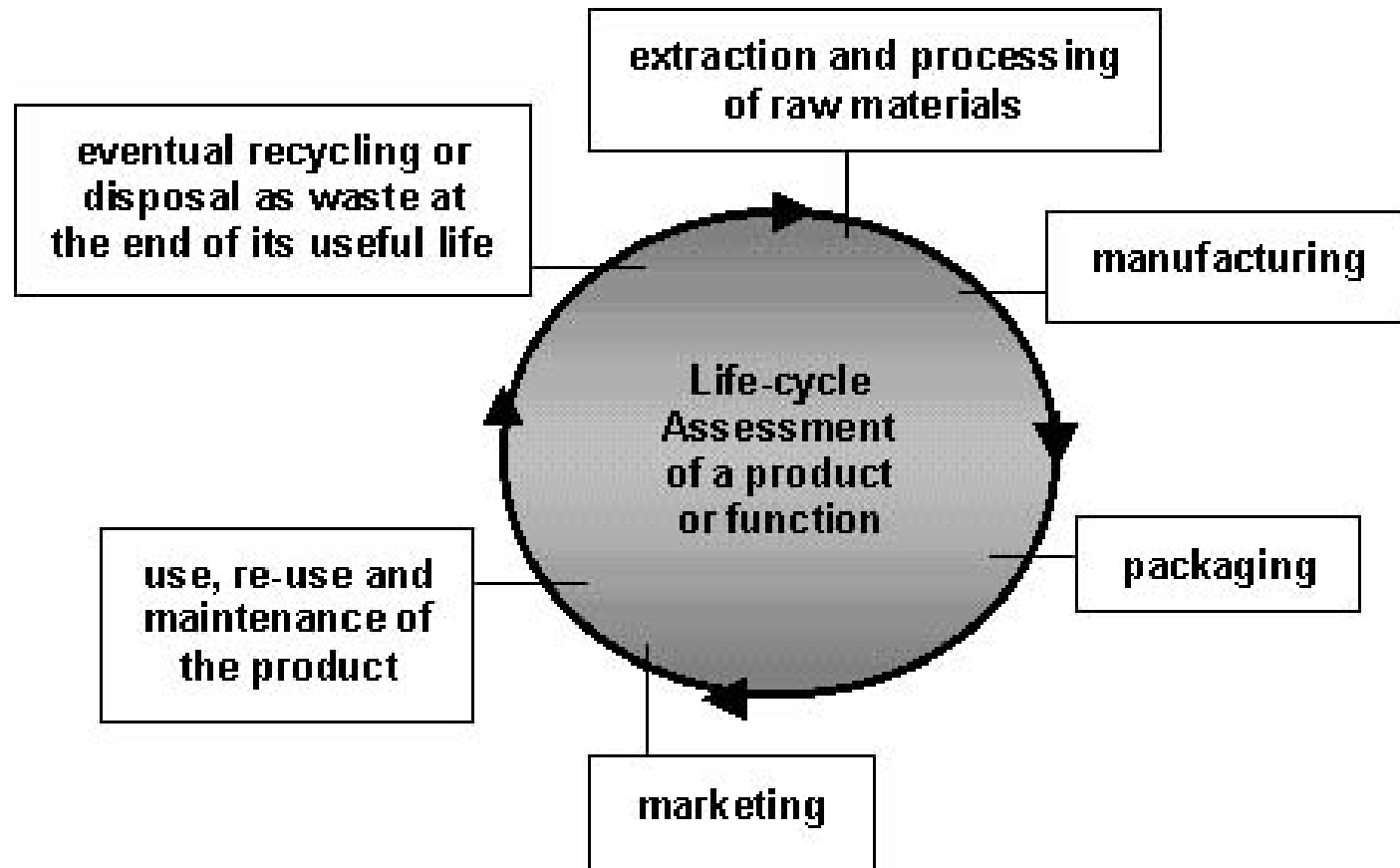


The Human Earth (MAE 124/ESYS 103)

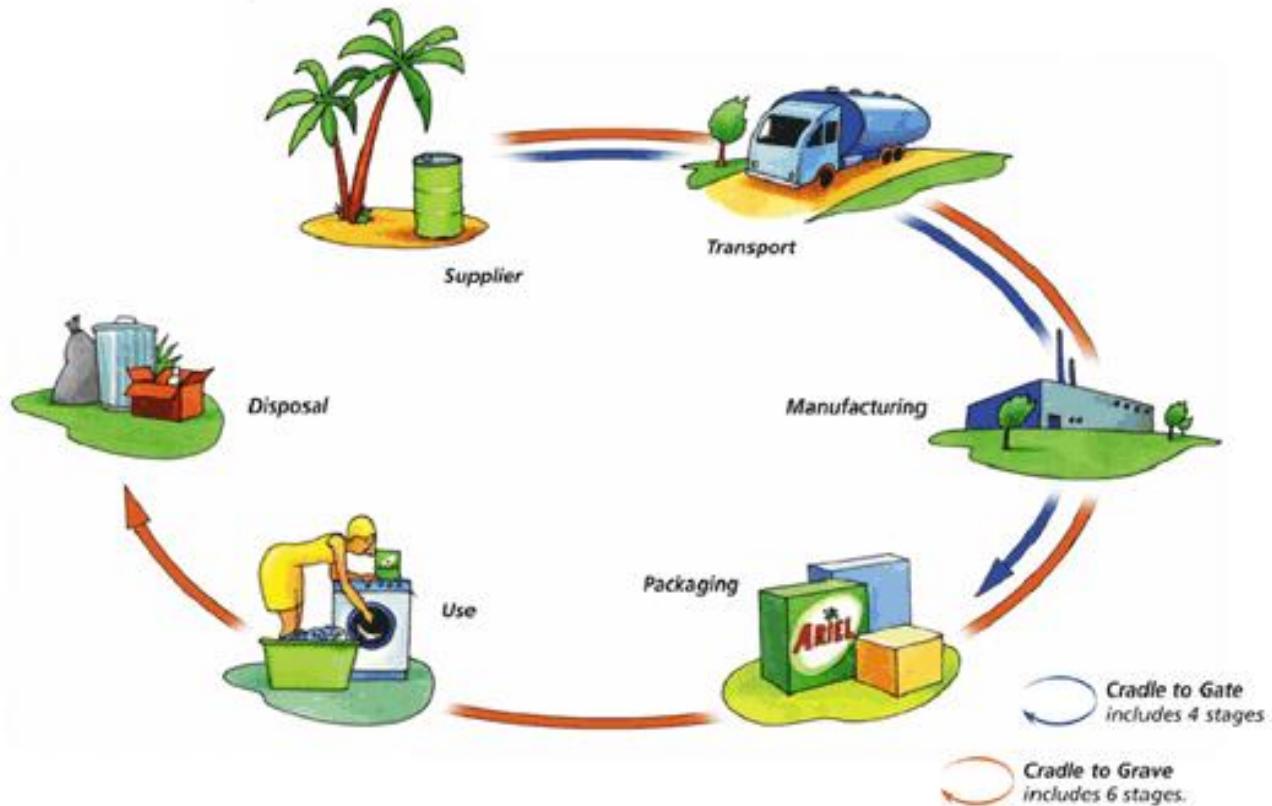
Lecture 8

Detailed life cycle assessment

Life Cycle Assessment



Proctor & Gamble: Life Cycle Assessment



Proctor & Gamble: LCA Intercomparison

	Regular Powder	Compact Powder	Powder Tablet	Compact Liquid	Liquid Tablet
For 1 wash in the UK					
Recommended dosage	High Impact (H)	Medium Impact (M)	Medium Impact (M)	Medium Impact (M)	Low Impact (L)
Packaging	Medium Impact (M)	Low Impact (L)	Medium Impact (M)	Medium Impact (M)	High Impact (H)
Energy, air/waterborne emissions, acidification, climate change, human toxicity	Medium Impact (M)	Medium Impact (M)	Medium Impact (M)	Medium Impact (M)	Medium Impact (M)
Aquatic toxicity	Medium Impact (M)	Low Impact (L)	Medium Impact (M)	Medium Impact (M)	High Impact (H)
Eutrophication	Low Impact (L)	Low Impact (L)	Medium Impact (M)	Medium Impact (M)	High Impact (H)
Ozone depletion	High Impact (H)	Medium Impact (M)	Medium Impact (M)	Low Impact (L)	Low Impact (L)
Photochemical smog	Medium Impact (M)	Medium Impact (M)	High Impact (H)	Low Impact (L)	Low Impact (L)

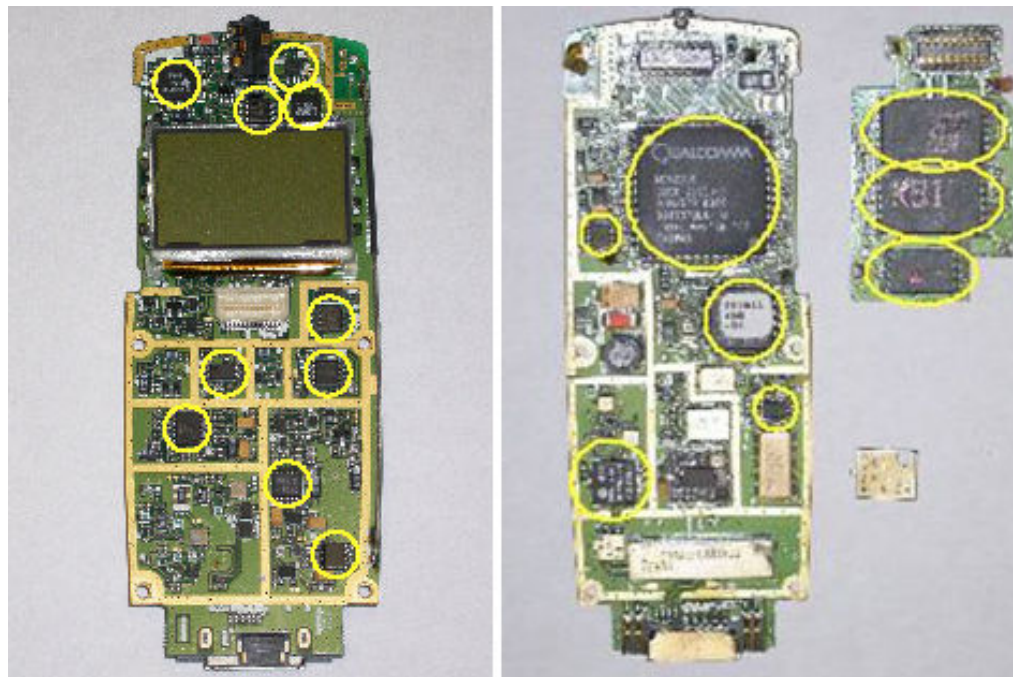
LCA: Cell Phone



case, display, printed wiring board, keypad, microphone/speaker, antenna, battery, adapter (not shown)

<http://www.enviroliteracy.org/article.php/1119.html>

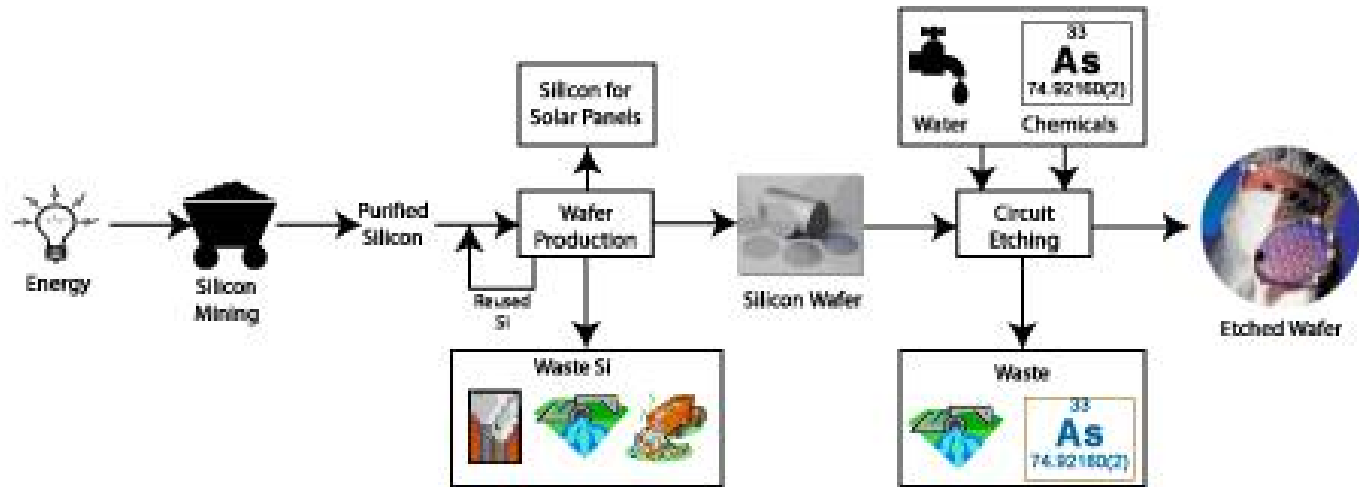
LCA: Cell Phone Computer Chips



18 chips

<http://www.enviroliteracy.org/article.php/1119.html>

LCA: Computer Chips



<http://www.enviroliteracy.org/article.php/1275.html>

Sydney Olympics Stadium



<http://buildca.rmit.edu.au/casestud/stadium/Stadium.html>